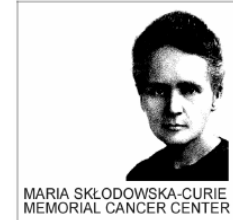



Zalecenia ESTRO i ABS dla brachyterapii



Ewelina Gruszczyńska

**Centrum Onkologii-Instytut im. M. Skłodowskiej-Curie
Warszawa**



Zalecenia GEC-ESTRO (**E**uropean **S**oci**e**Ty for
Radiation and **O**ncology) i ABS (**A**merican
Brachytherapy **S**ociety) w brachyterapii
nowotworów:

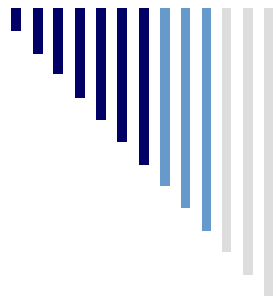
- ginekologicznych
 - piersi
-



Ginekologia

- GYN GEC ESTRO rekomendacje I (Haie-Meder et al.) - konturowanie
- GYN GEC ESTRO rekomendacje II (Pötter et al.) – parametry dawek
- GYN GEC ESTRO rekomendacje III (Hellebust et al.) – rekonstrukcji aplikatorów
- GYN GEC ESTRO rekomendacje IV (Dimopoulos et al.) - obrazowanie
- rekomendacje ABS dla GYN (Viswanathanand Thomadsen, ABS Cervical Cancer Recommendations Committee) - ogólne
- ABS rekomendacje dla GYN HDR (Viswanathan et al.)
- ABS rekomendacje dla GYN PDR (Lee et al.)

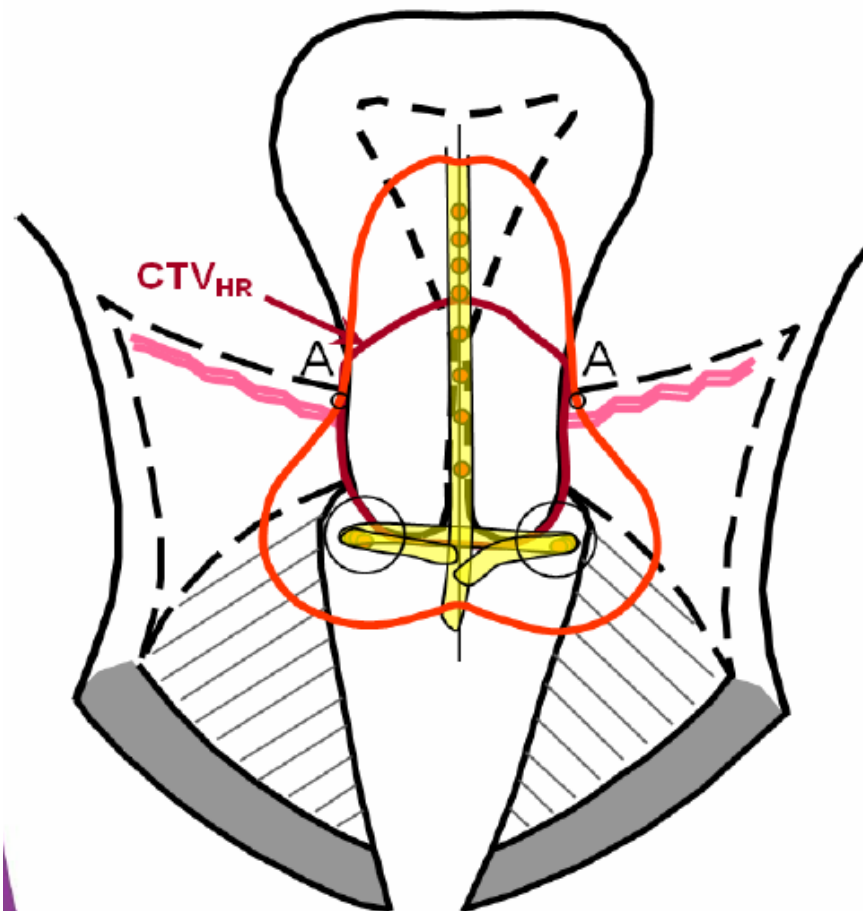
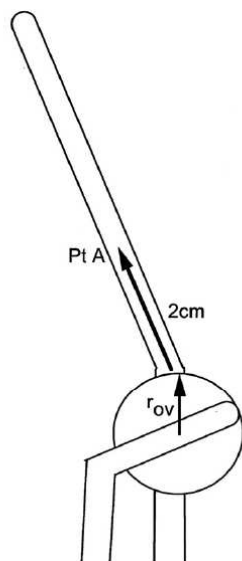
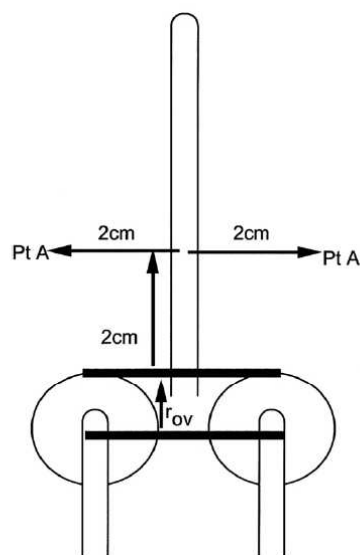
- ICRU 38 revision (coordinators: R. Pötter and C. Kirisits, committee members: B. Erickson, C. Haie-Meder, J. Lindegaard, E. van Limbergen, J. Rownd, K. Tanderup, B. Thomadsen) – w wydaniu ICRU 88

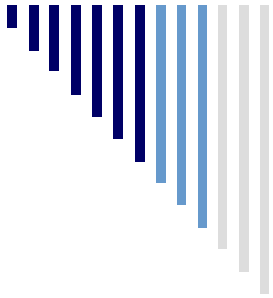


Ginekologia

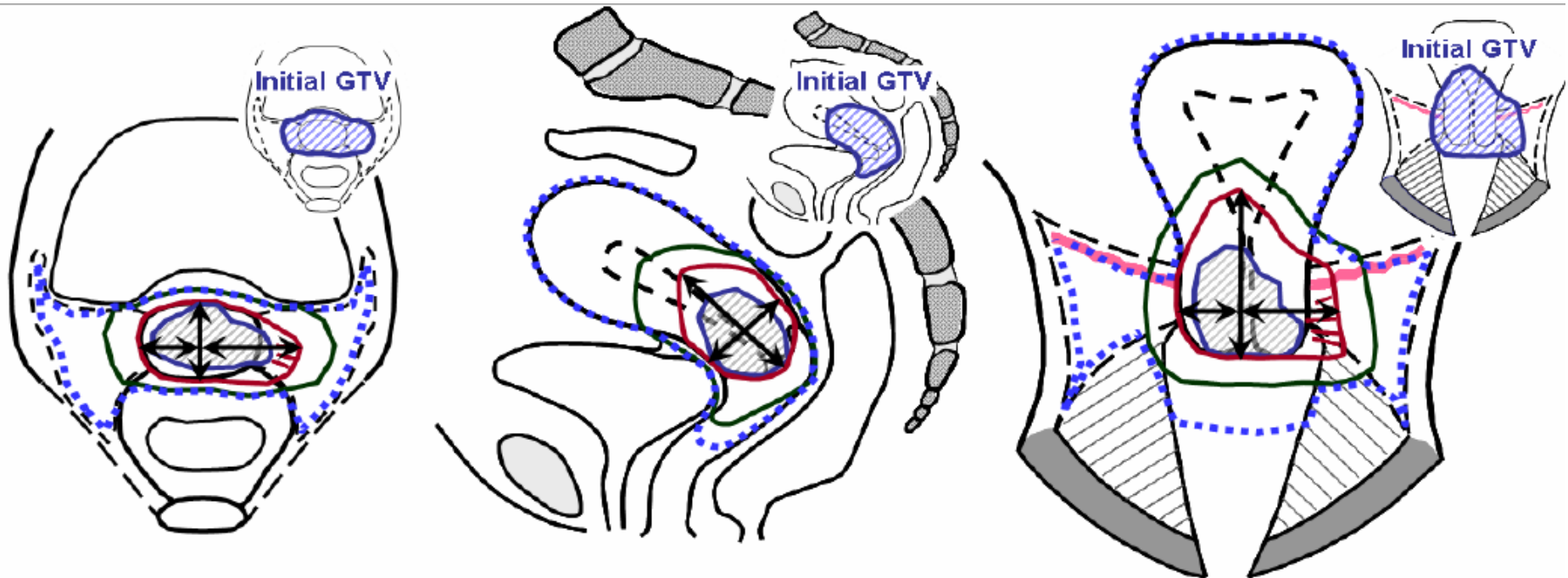
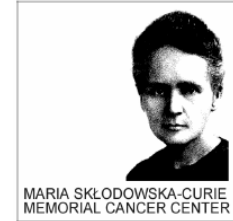


Punkty A





Ginekologia



GTV —

HR-CTV —

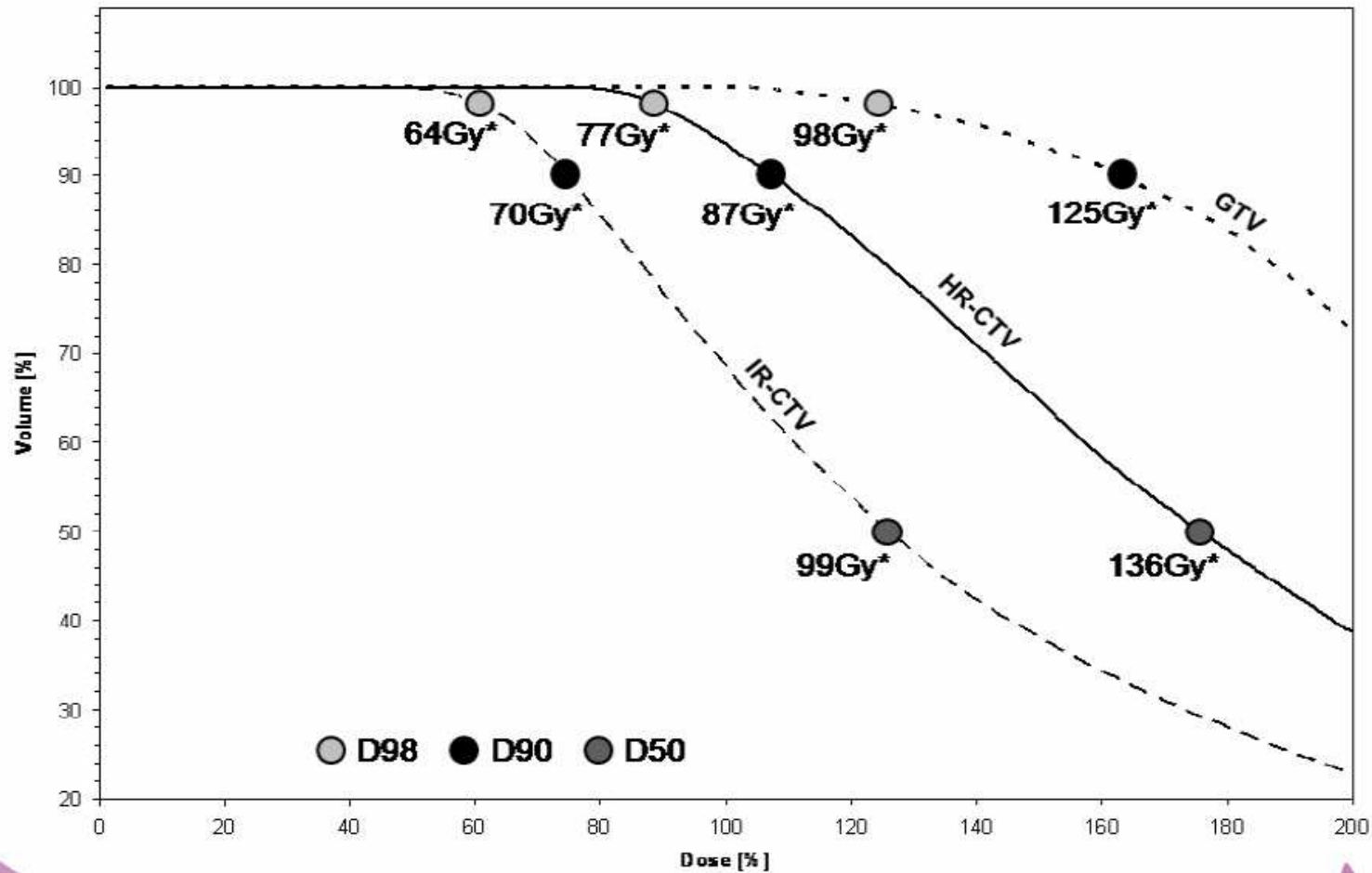
IR-CTV - - - -

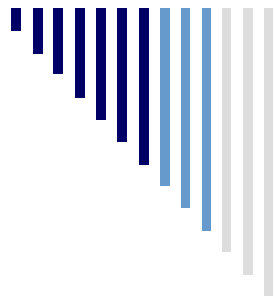
Kirisits

Ginekologia

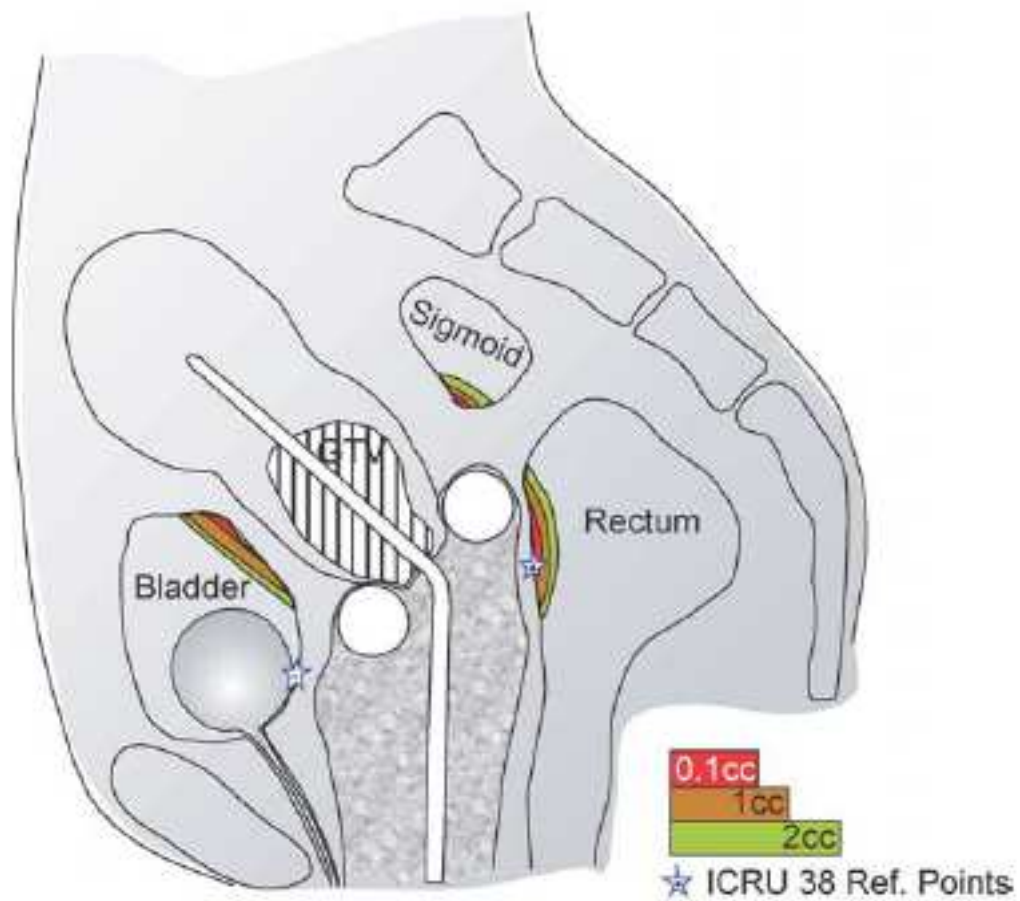


MARIA SKŁODOWSKA-CURIE
MEMORIAL CANCER CENTER

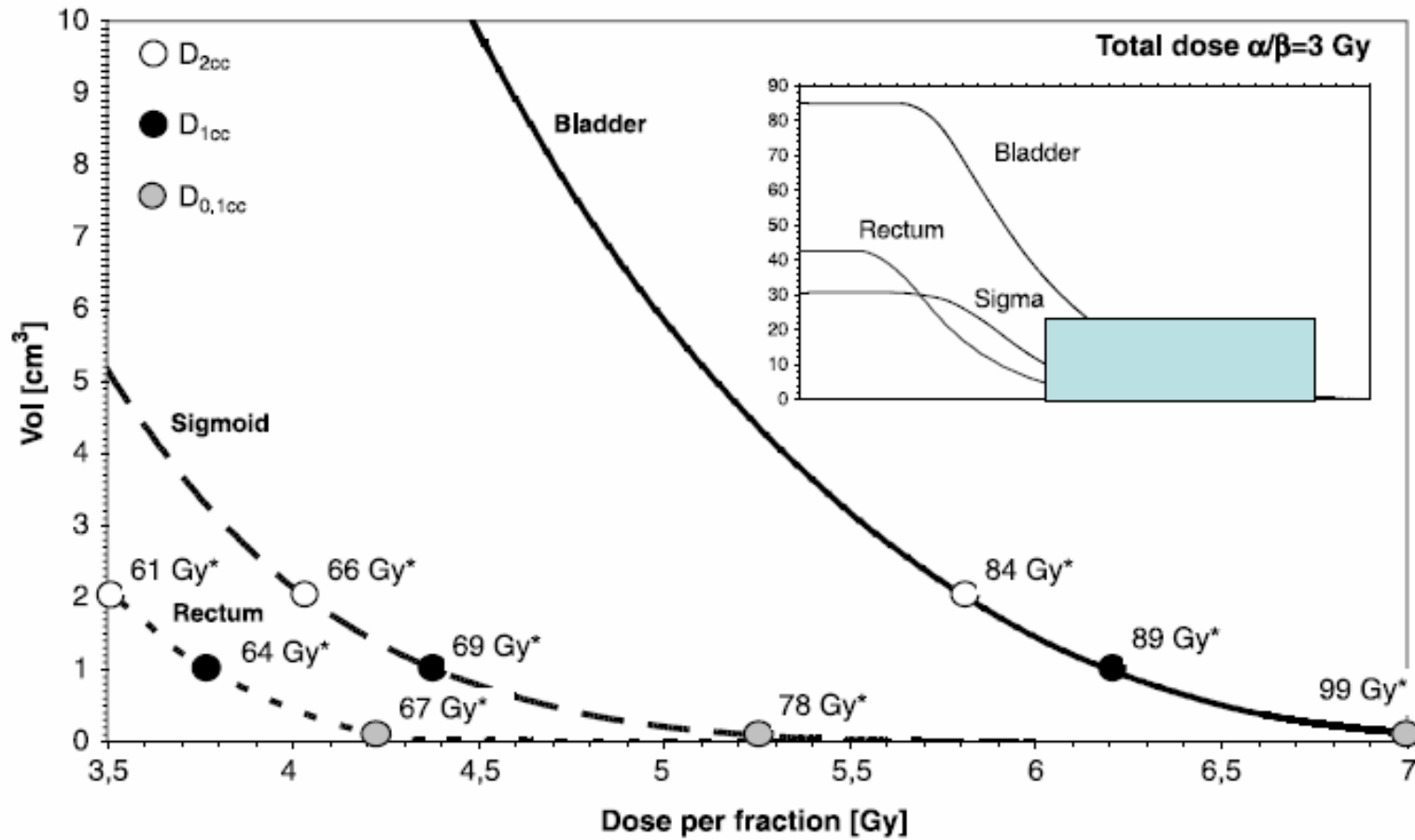


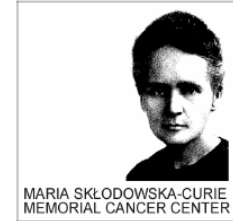


Ginekologia



Ginekologia





Ginekologia

□ HR-CTV	D90	EQD2 ₁₀	≥ 85 Gy
□ Pęcherz	D2cm ³	EQD2 ₃	≤ 90 Gy
□ Odbytnica	D2cm ³	EQD2 ₃	≤ 70 Gy
□ Esica	D2cm ³	EQD2 ₃	≤ 75 Gy

Ginekologia



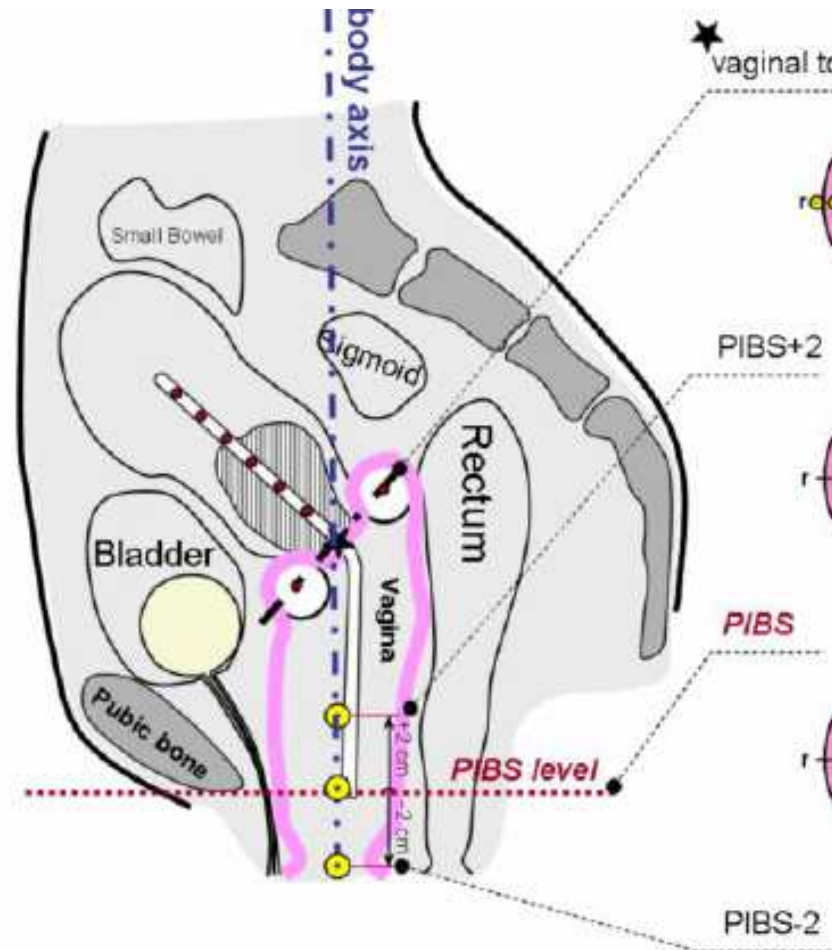
Raportowanie dawek dla:

- HR-CTV - D98, D90, D50
- Jeśli dawka specyfikowana na IR-CTV - D98, D90
- Jeśli wrysowany obszar GTV - D98
- TRAK
- Dawki w punkcie A
- Punkt odbytnicy
- $D_{0.1\text{cm}^3}$, $D_{2\text{cm}^3}$, $D_{1\text{cm}^3}$, $D_{5\text{cm}^3}$ dla pęcherza i odbytnicy
- Punkt pęcherza dla obrazowania dwupłaszczyznowego

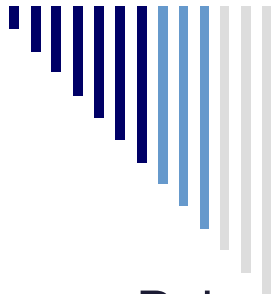
Ginekologia



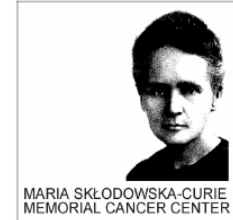
- Dla pochwy dawki w punktach PIBS



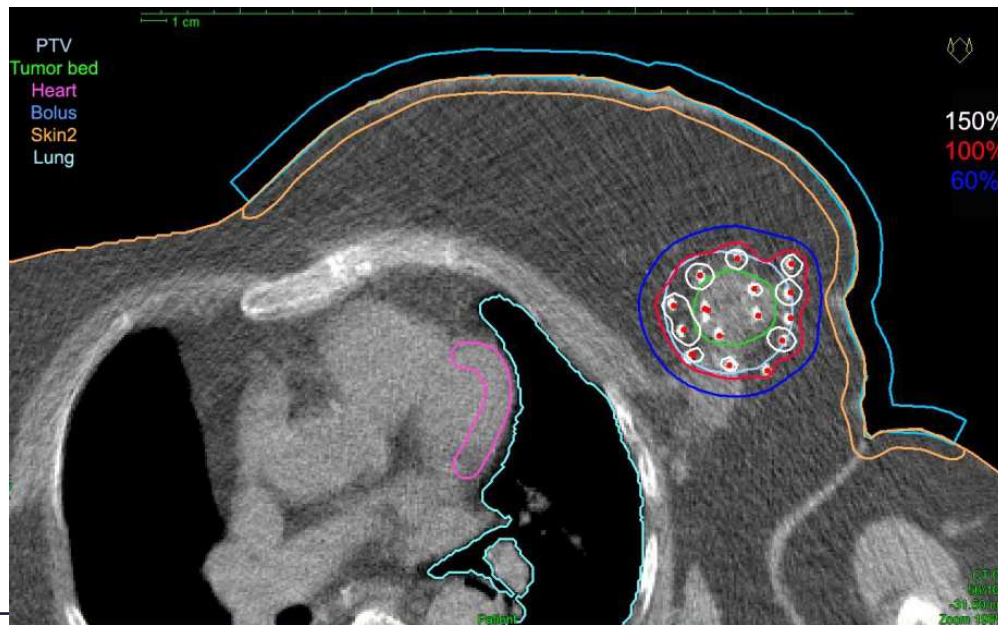
Kirisits

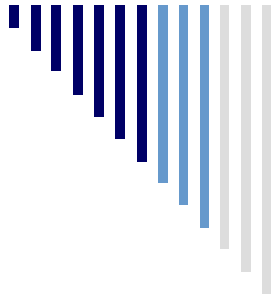


Pierś

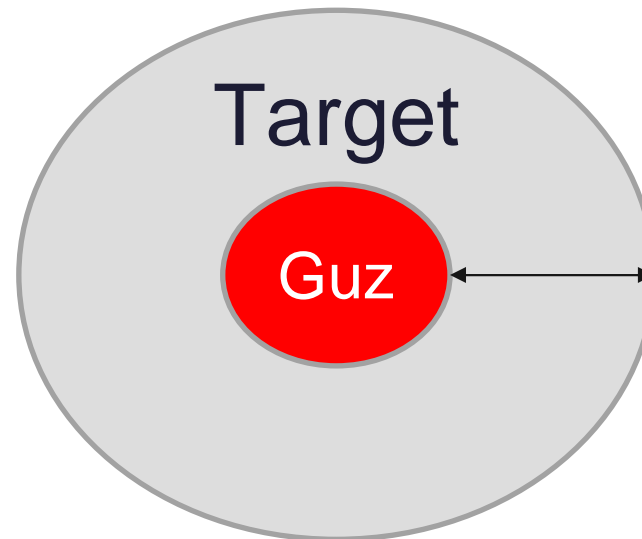
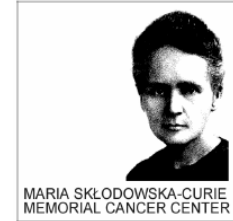


- Pokrycie targetu (D90, V100)
- Objętości wysokich dawek (V150, V200)
- Współczynniki (DNR, DHI, COIN)
- Skin dose

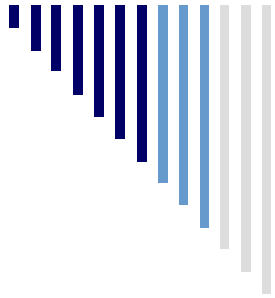




Pierś



Target = guz + 2cm marginesu – margines chirurgiczny

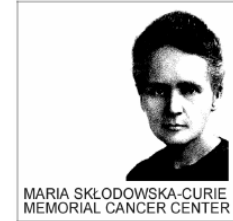
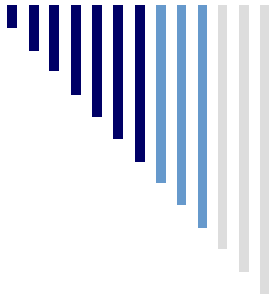


Pierś



Kryteria dawek:

- $V100 \geq 90\%$
- $D90 > 90\%$ (ABS)
- $V150 < 70 \text{ cm}^3$ (ABS)
- $V200 < 20 \text{ cm}^3$ (ABS)
- $DNR < 0,35$
- $D_{\text{max skin}} \leq 70\%$ ABS $\leq 100\%$



Dziękuję za uwagę
